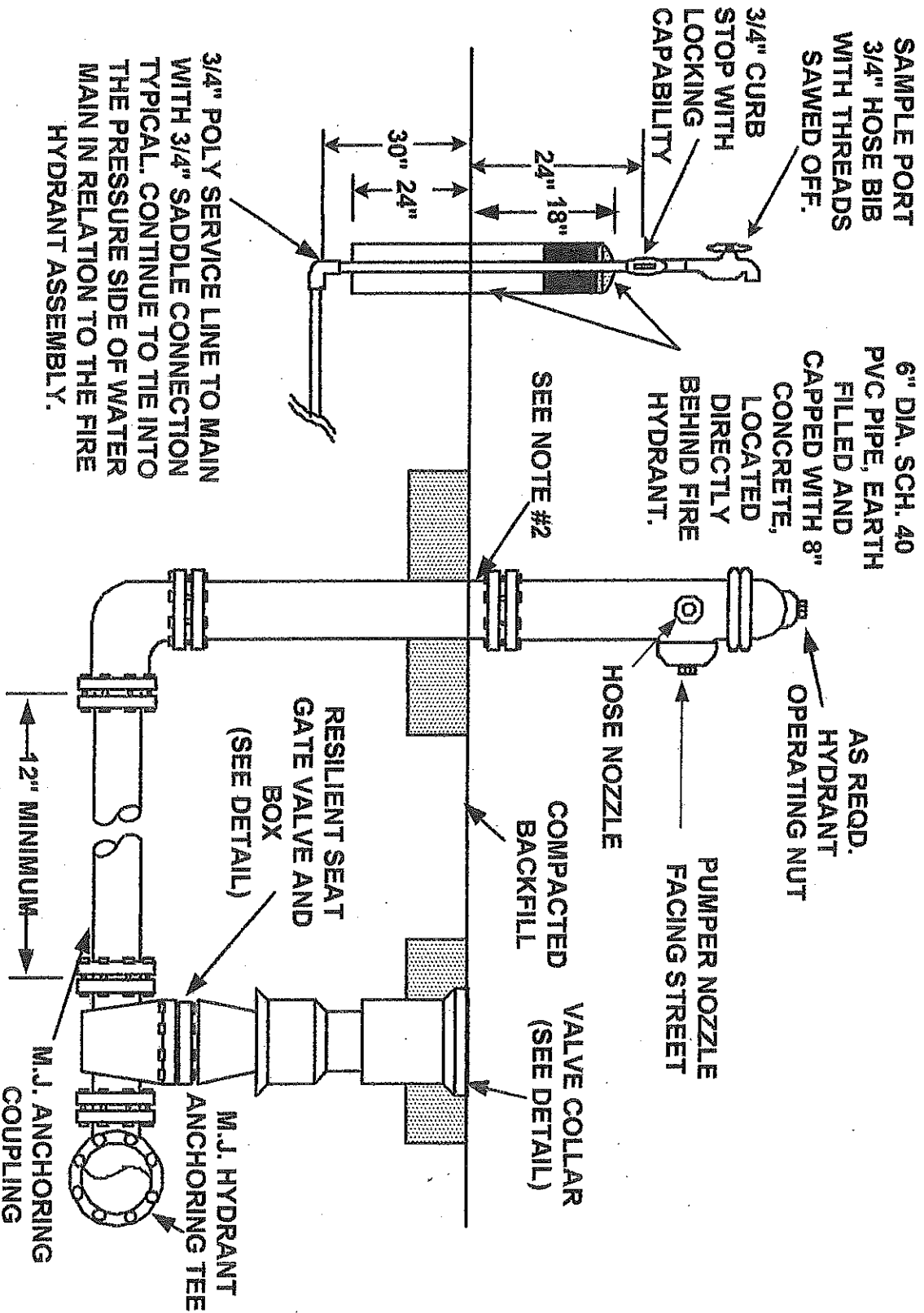


CITY OF AUBURNDALE

FIRE HYDRANT ASSEMBLY DETAILS



NOTES:

1. FIRE HYDRANT SHALL BE SUPPLIED WITH A WEEP HOLE (DRY BARREL TYPE).
2. CLEARANCE BETWEEN BOTTOM OF BOLTS AND TOP OF SHEAR PAD SHALL BE 6".
3. RESTRAINED JOINTS REQUIRED THROUGHOUT FIRE HYDRANT ASSEMBLY.

**CITY OF AUBURNDALE
COMMERCIAL WATER CONNECTIONS
3/4" THRU 2" (AND BACKFLOW DEVICE)**

SCALE: NONE

REDUCED PRESSURE ZONE
BACKFLOW PREVENTER INSTALLED
TO MANUFACTURER
RECOMMENDATIONS

CURB STOP VALVE

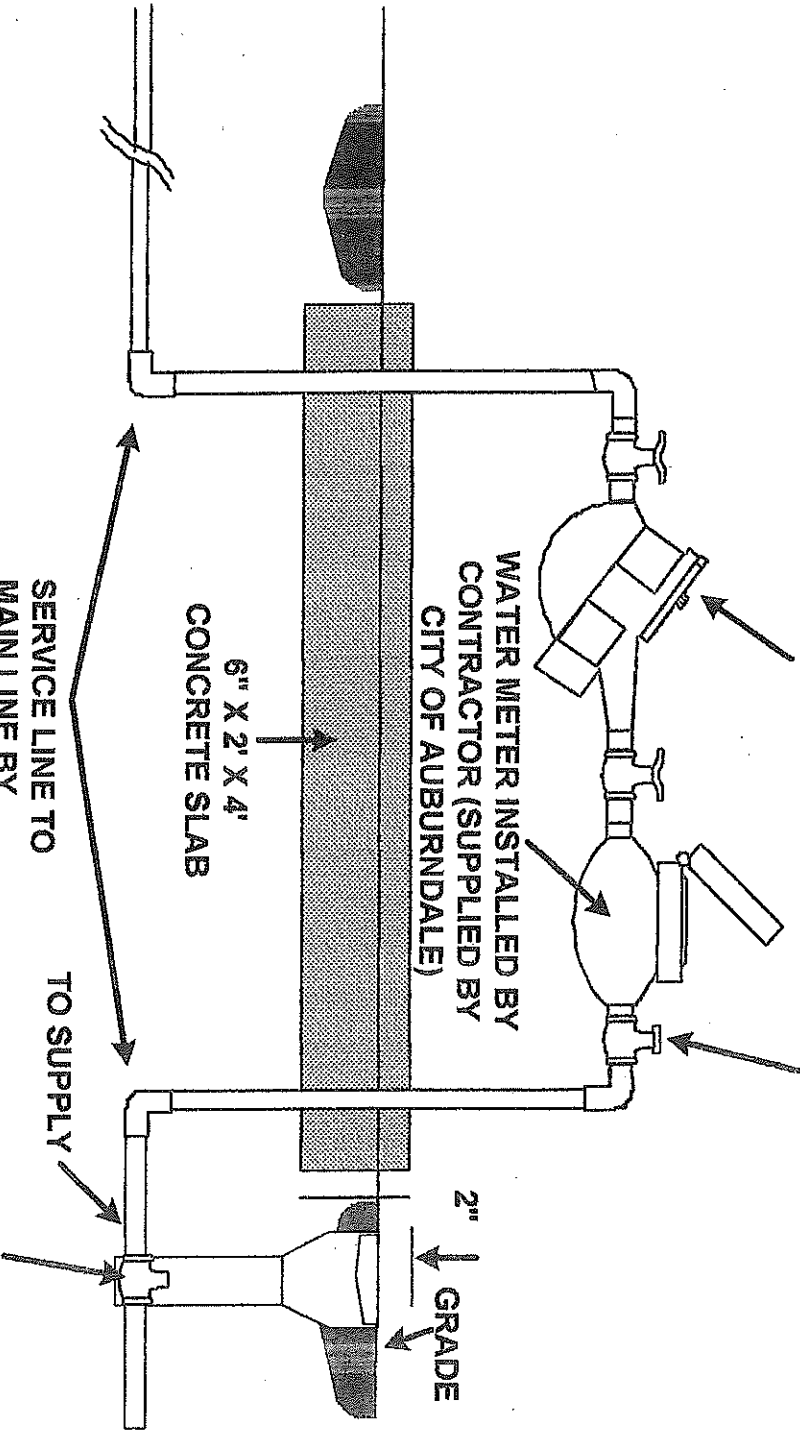
WATER METER INSTALLED BY
CONTRACTOR (SUPPLIED BY
CITY OF AUBURNDALE)

6" X 2' X 4"
CONCRETE SLAB

SERVICE LINE TO
MAIN LINE BY
INSTALLER

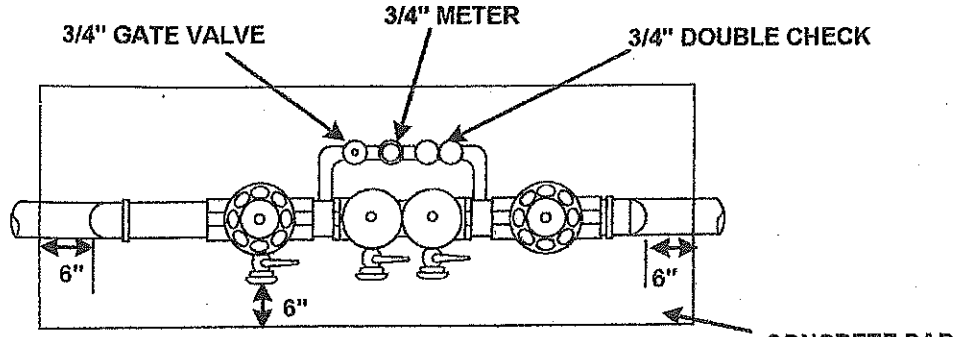
TO SUPPLY
BALL VALVE WITH
SQUARE NUT & VALVE
BOX ASSEMBLY

2" GRADE

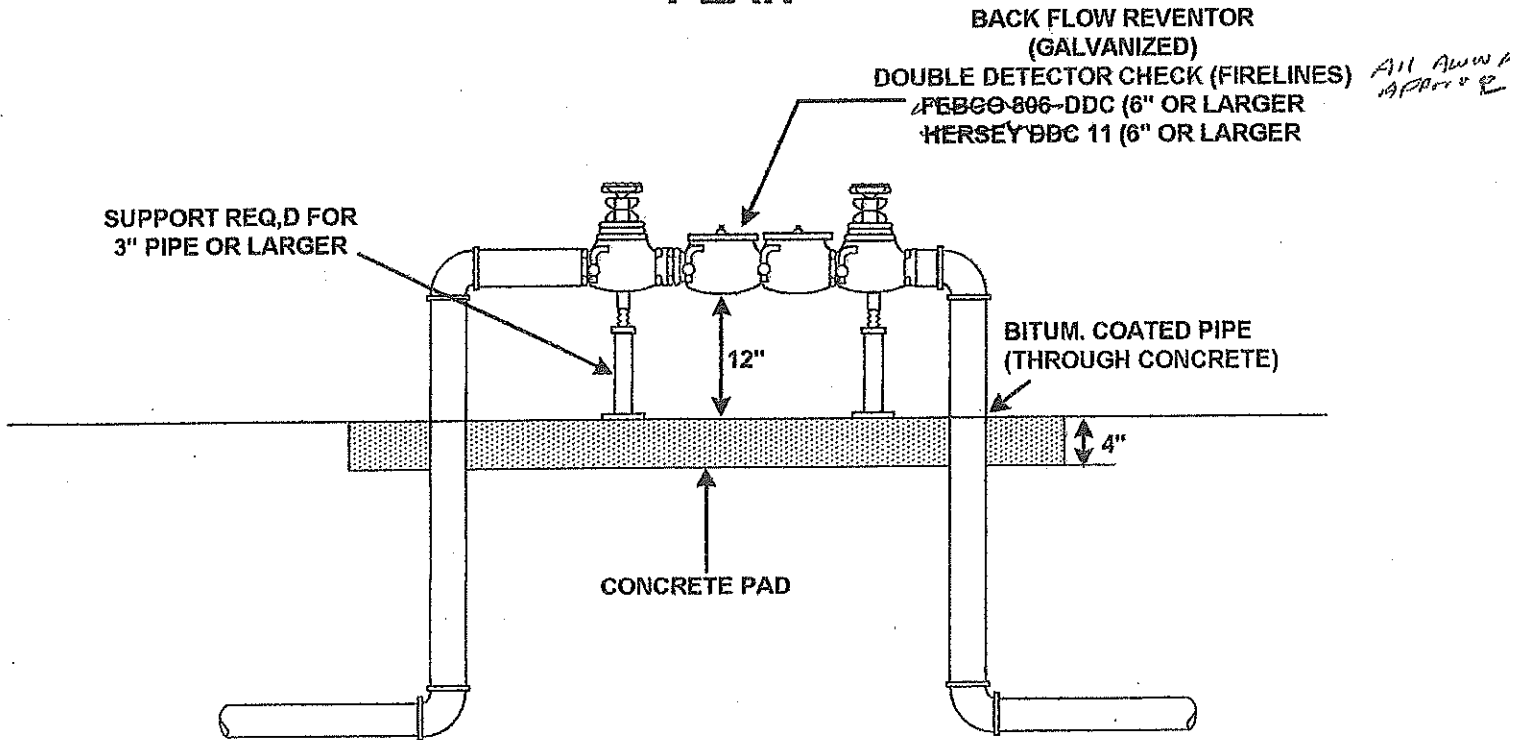


CITY OF AUBURNDALE

FIRE LINE BACK FLOW PREVENTION



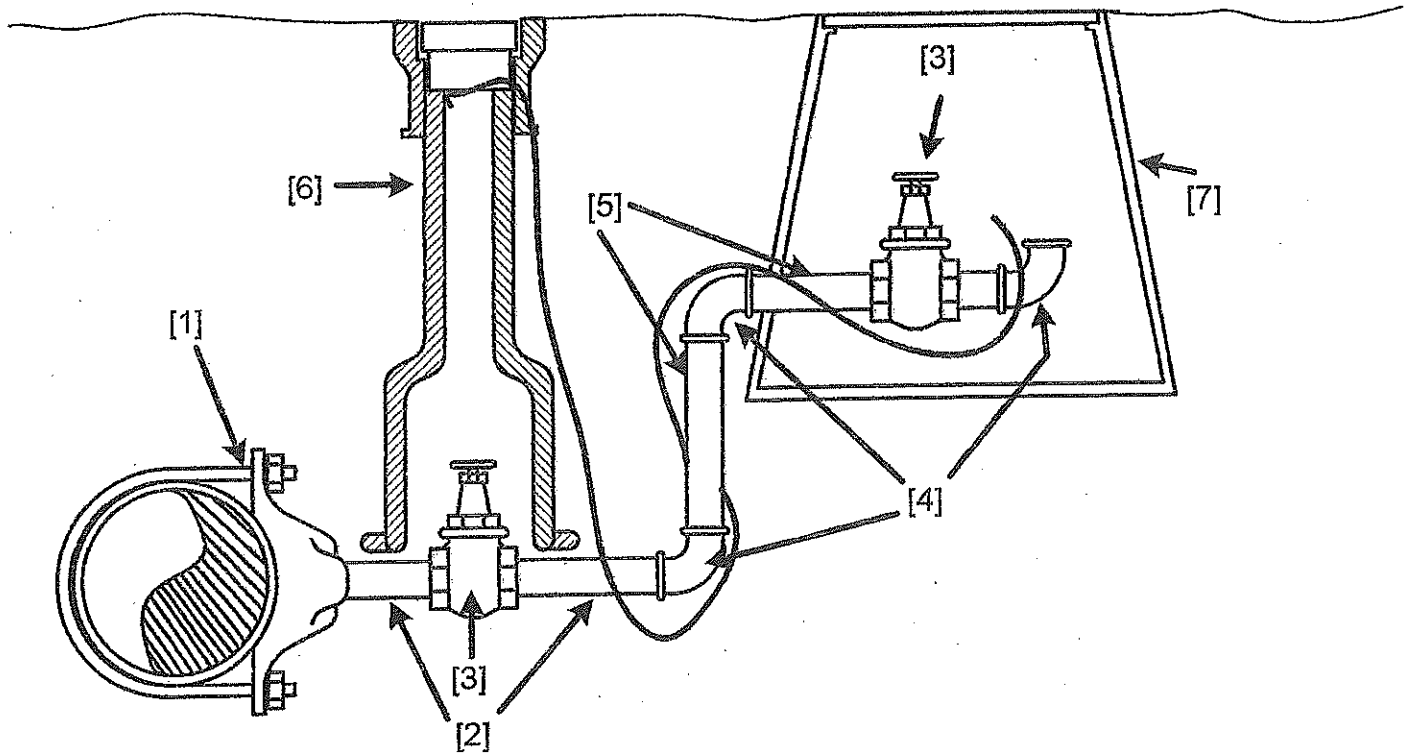
PLAN



SECTION

CITY OF AUBURNDALE UTILITIES

FLUSH VALVE DETAILS

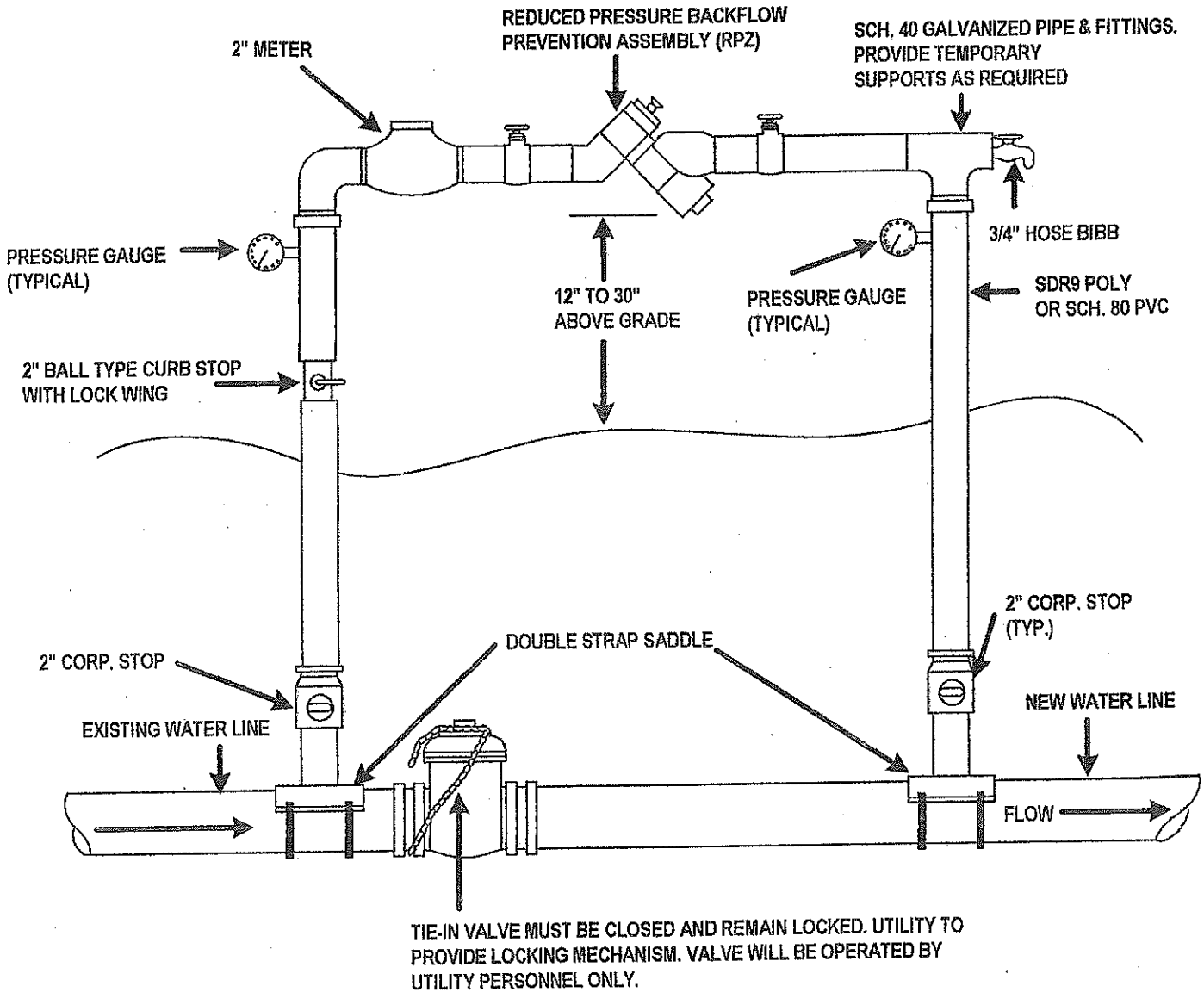


BILL OF MATERIALS			
1	1	TAPPING SADDLE	
2	3	THREADED NIPPLE, GALVANIZED	
3	2	2" BALL VALVE	
4	3	90° ELBOW, GALVANIZED	4
5	2	PIPE, GALVANIZED	4
6	1	VALVE BOX	
7	1	METER BOX	

GENERAL NOTES:

1. ADJUSTABLE VALVE BOX TO BE INSTALLED IN PAVED AREAS ONLY.
2. FIELD CONDITIONS MAY CHANGE THE LAYOOUT OF THIS DRAWING.
3. ALL CHANGES SHALL BE AT THE DISCRETION OF THE WATER DEPARTMENT.
4. TRACER WIRE TO BE BROUGHT UP TO GRADE AT EVERY IN-LINE VALVE AND SERVICE VALVE. WIRE SHALL BE CONTINUOUS AND TAPED.

CITY OF AUBURNDALE TEMPORARY JUMPER CONNECTION DETAILS

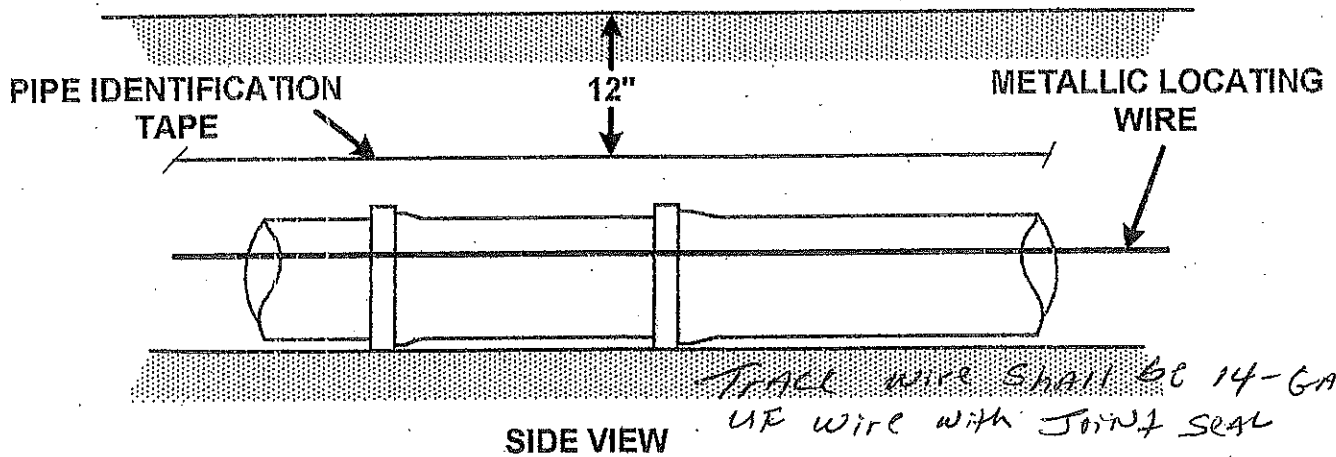
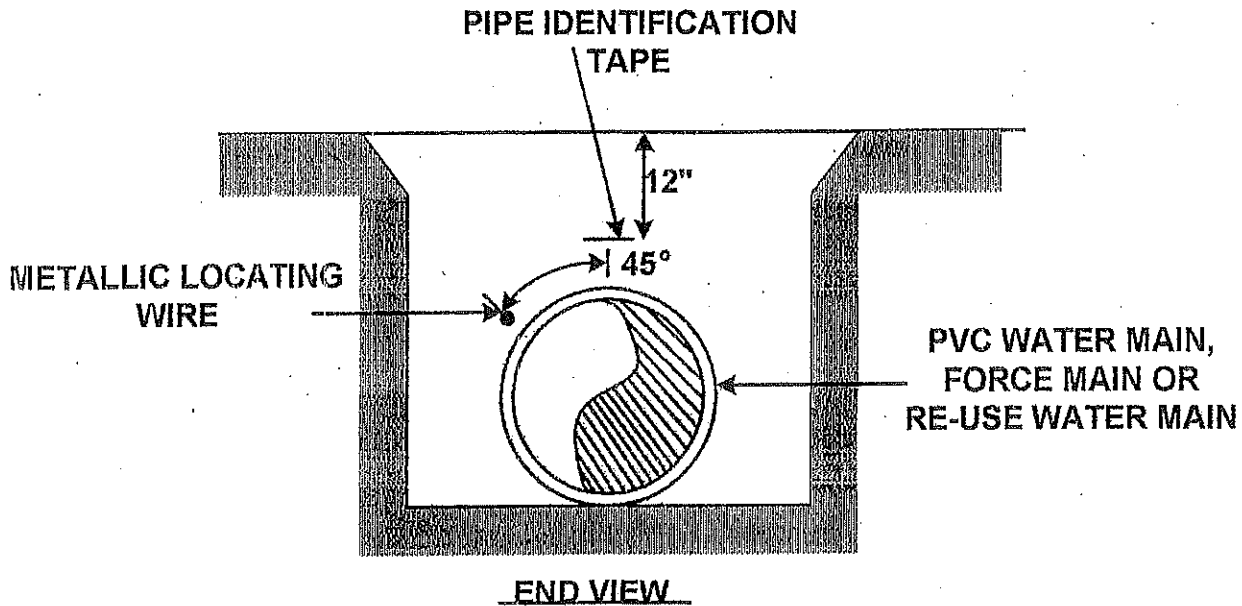


NOTE: LOCATION TO BE DETERMINED AT TIME OF PRECONSTRUCTION CONFERENCE WITH UTILITY.

1. A TEMPORARY JUMPER CONNECTION IS REQUIRED AT ALL CONNECTIONS BETWEEN EXISTING ACTIVE WATER MAINS AND PROPOSED NEW WATER MAIN IMPROVEMENTS.
2. THE DETAIL ABOVE IS TO BE USED FOR FILLING ANY NEW WATER MAIN OF ANY SIZE FROM EXISTING ACTIVE WATER MAINS AND FOR FLUSHING OF NEW MAINS UP TO 8" IN DIAMETER (2.5 FPS MINIMAL VELOCITY) AND FOR FILLING BACTERIOLOGICAL SAMPLES FROM ANY NEW WATER MAIN OF ANY SIZE. THE JUMPER CONNECTION SHALL BE MAINTAINED UNTIL AFTER FILLING, FLUSHING, TESTING, AND DIS-INFECTION OF THE NEW MAIN HAS BEEN SUCCESSFULLY COMPLETED AND CLEARANCE FOR USE FROM THE FLORIDA DEPARTMENT OF ENVIRONMENTAL PROTECTION (FDEP) & OTHER PERTINENT AGENCIES HAS BEEN RECEIVED BY THE CITY OF AUBURNDALE UTILITY DEPARTMENT. THIS JUMPER CONNECTION SHALL ALSO BE USED TO MAINTAIN A MINIMUM PRESSURE OF 20 PSI IN THE NEW MAINS ALL THE TIME AFTER DIS-INFECTION AND UNTIL THE FDEP CLEARANCE LETTER IS OBTAINED. ADEQUATE THRUST BLOCKING AND/OR RESTRAINTS SHALL BE PROVIDED TEMPORARILY, AS REQUIRED. PIPE AND FITTINGS USED FOR CONNECTING THE NEW PIPE TO THE EXISTING PIPE SHALL BE DIS-INFECTIONED PRIOR TO INSTALLATION IN ACCORDANCE WITH AWWA C651, 1992 EDITION. THIS TAPPING SLEEVE AND THE EXTERIOR OF THE MAIN TO BE TAPPED SHALL BE DIS-INFECTIONED BY SPRAYING OR SWABBING PER SECTION 11 OF AWWA C651-92.

CITY OF AUBURNDALE

PVC PIPE LOCATING WIRE DETAIL

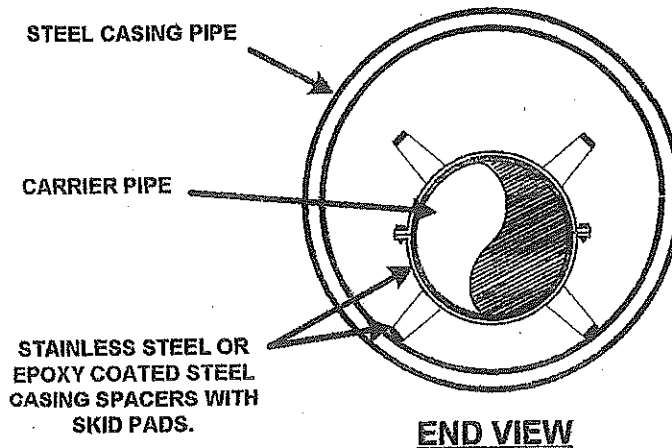
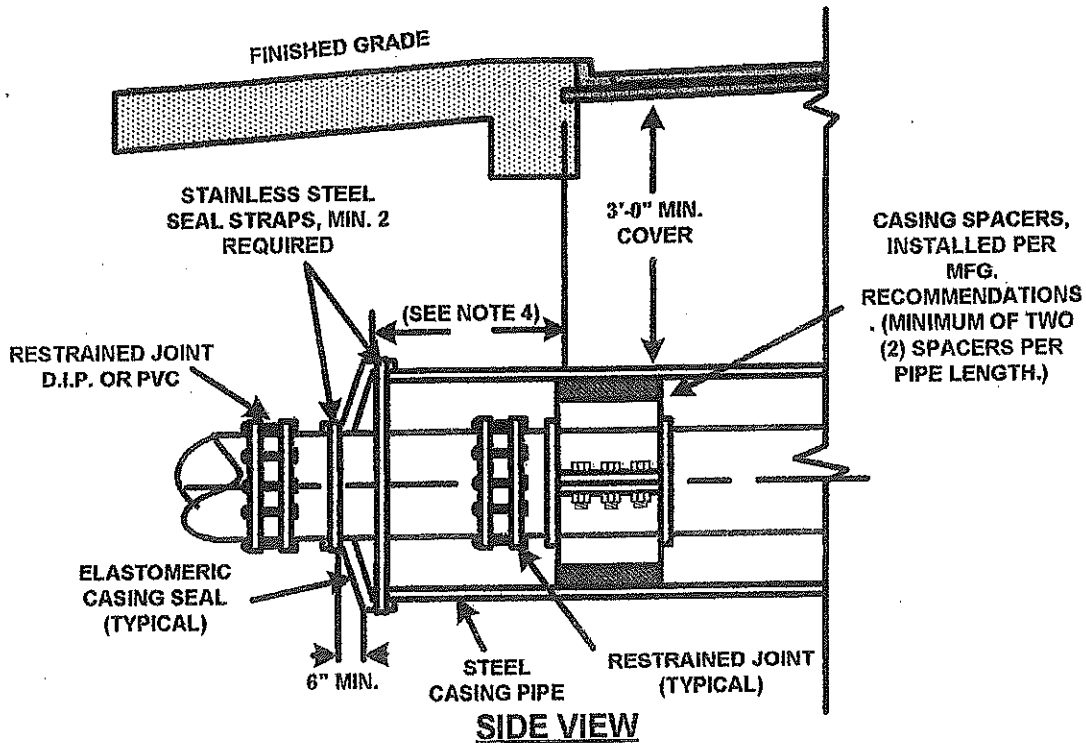


NOTES:

1. ALL PRESSURE PIPE SHALL REQUIRE INSULATED METALLIC LOCATING WIRE (14 GAUGE COPPER) CAPABLE OF DETECTION BY A CABLE LOCATOR AND SHALL BE BURIED DIRECTLY AGAINST THE PIPE.
2. LOCATING WIRE SHALL TERMINATE AT THE TOP OF EACH VALVE BOX AND AIR RELEASE VALVE AND BE CAPABLE OF EXTENDING 12" ABOVE TOP OF BOX IN SUCH A MANNER SO AS NOT TO INTERFERE WITH VALVE OPERATION.
3. USE DUCT TAPE AS NECESSARY TO HOLD WIRE DIRECTLY AGAINST THE PIPE.
4. ALL PRESSURE PIPE SHALL REQUIRE 3" ALUMINUM FOIL IDENTIFICATION TAPE INDICATING MATERIAL CONTAINED WITHIN PIPE (E.G... POTABLE WATER, REUSE WATER, RAW SEWAGE). TAPE SHALL BE BURIED DIRECTLY ABOVE THE CENTERLINE OF PIPE, AND UNBROKEN THE ENTIRE RUN OF PIPE.

CITY OF AUBURNDALE

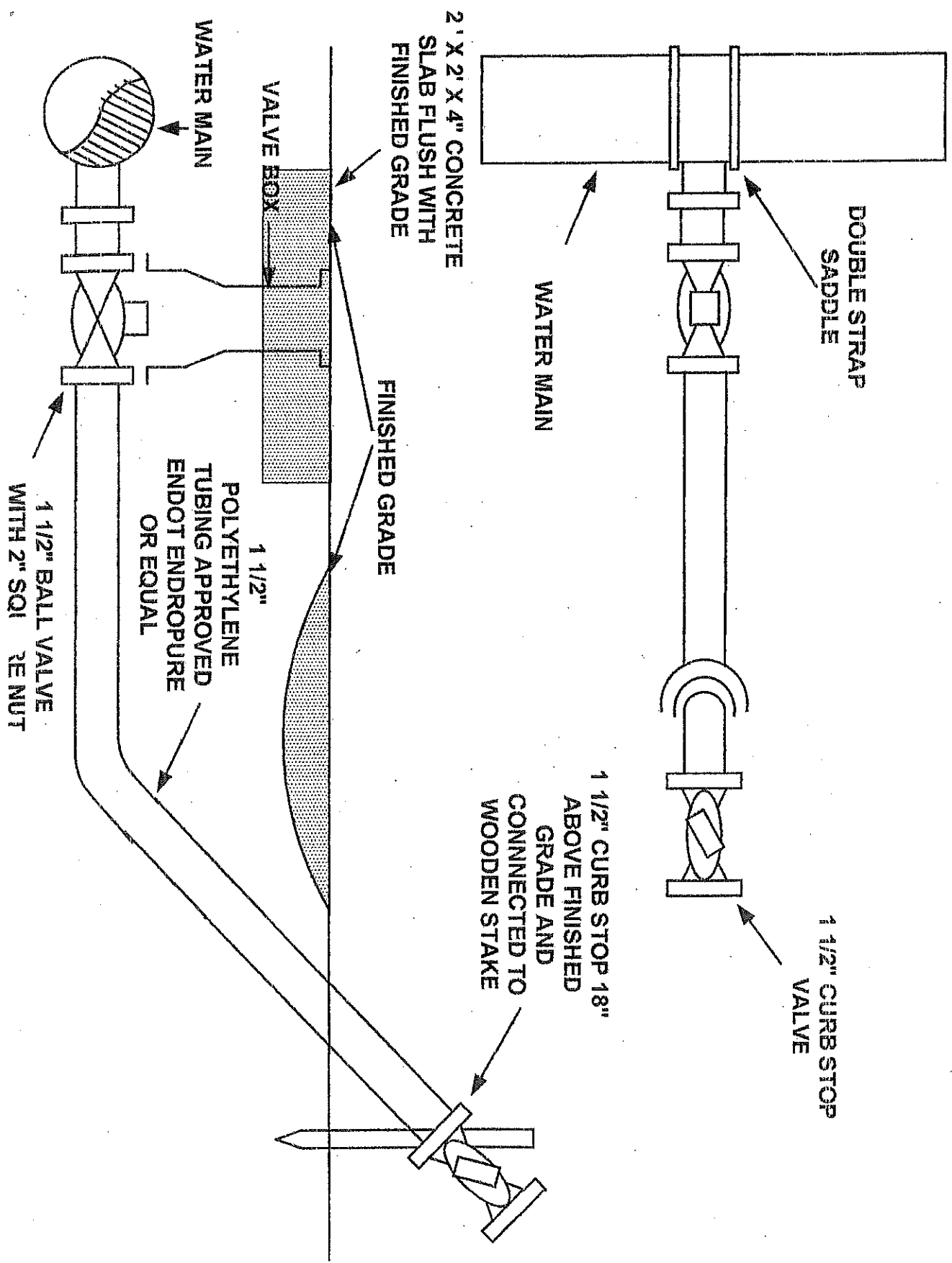
JACK & BORE DETAILS



NOTES:

1. WHEN CONSTRUCTION IS WITHIN FDOT JURISDICTION, ADDITIONAL REQUIREMENTS OF THE UTILITY ACCOMMODATION GUIDE SHALL BE MET.
2. CASING SPACERS ARE REQUIRED, WOOD SKIDS ARE PROHIBITED.
3. LARGER SKIDS SHALL BE REQUIRED FOR PIPE GREATER THAN 24" DIAMETER.
4. WHERE PRACTICAL, CASING SHALL EXTEND 10' BEHOND EDGE OF PAVEMENT AND SHALL NOT BE LESS THAN 6' BEYOND EDGE OF PAVEMENT IN ANY CASE. THE COUNTY MAY REQUIRE LONGER CASING FOR DEEPER BORES.
5. ALL SKID PADS SHALL FIRMLY TOUCH CASING FOR GRAVITY PIPE APPLICATIONS.

CITY OF AUBURNDALE WATER SERVICE DETAILS



CITY OF AUBURNDALE TYPICAL NON-ROADWAY VALVE

WORD WATER WRITTEN
IN COVER

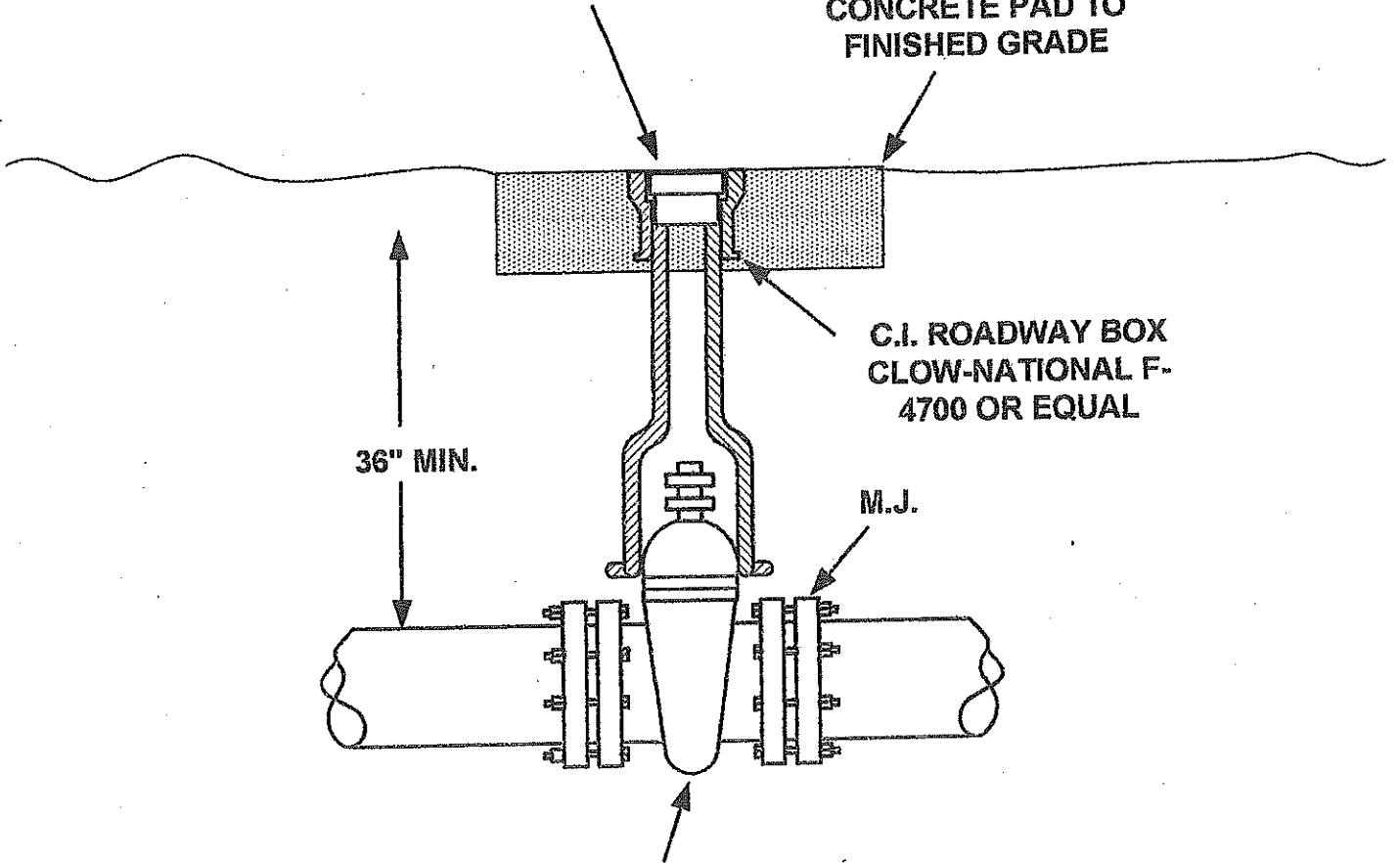
INSTALL 24"x24"x4"
CONCRETE PAD TO
FINISHED GRADE

C.I. ROADWAY BOX
CLOW-NATIONAL F-
4700 OR EQUAL

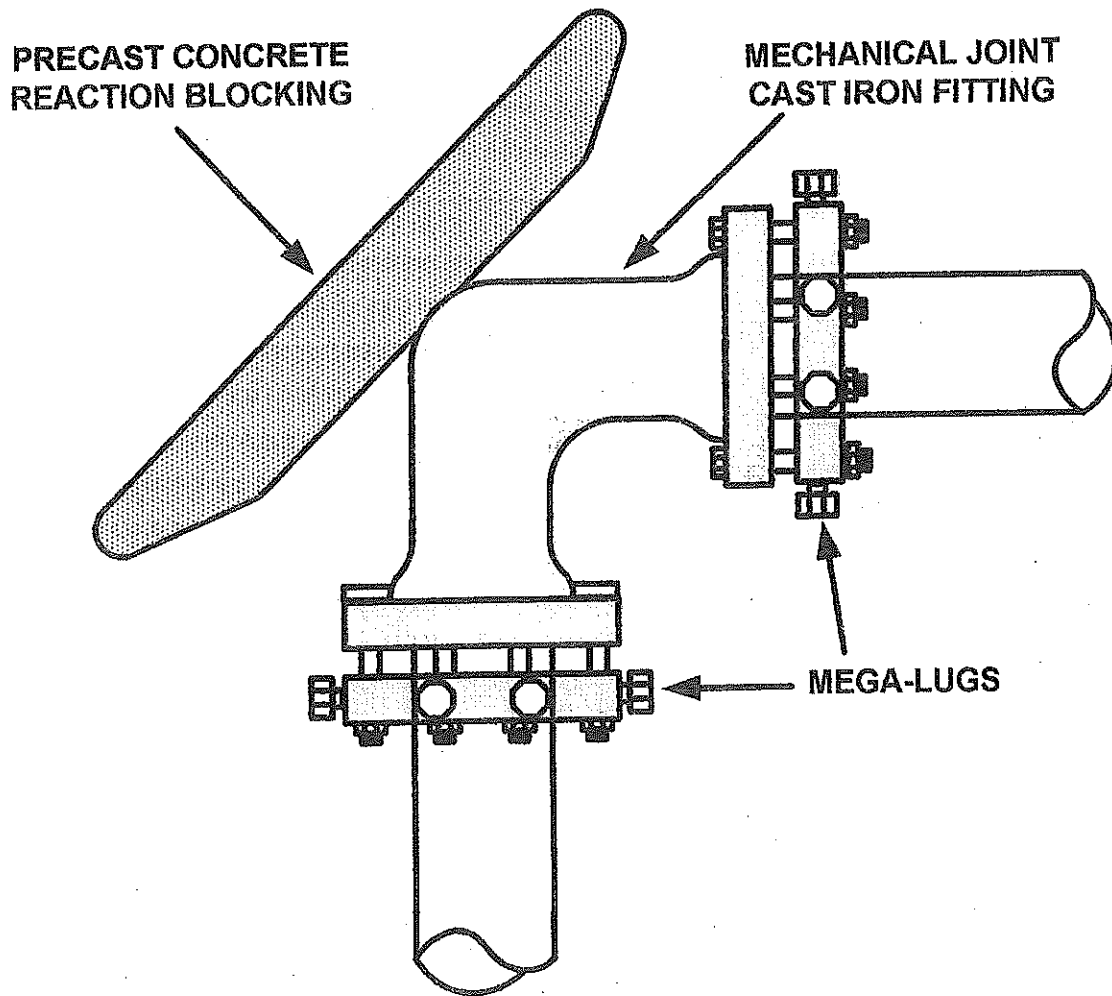
36" MIN.

M.J.

RESILIENT SEAT VALVE
3" OR LARGER

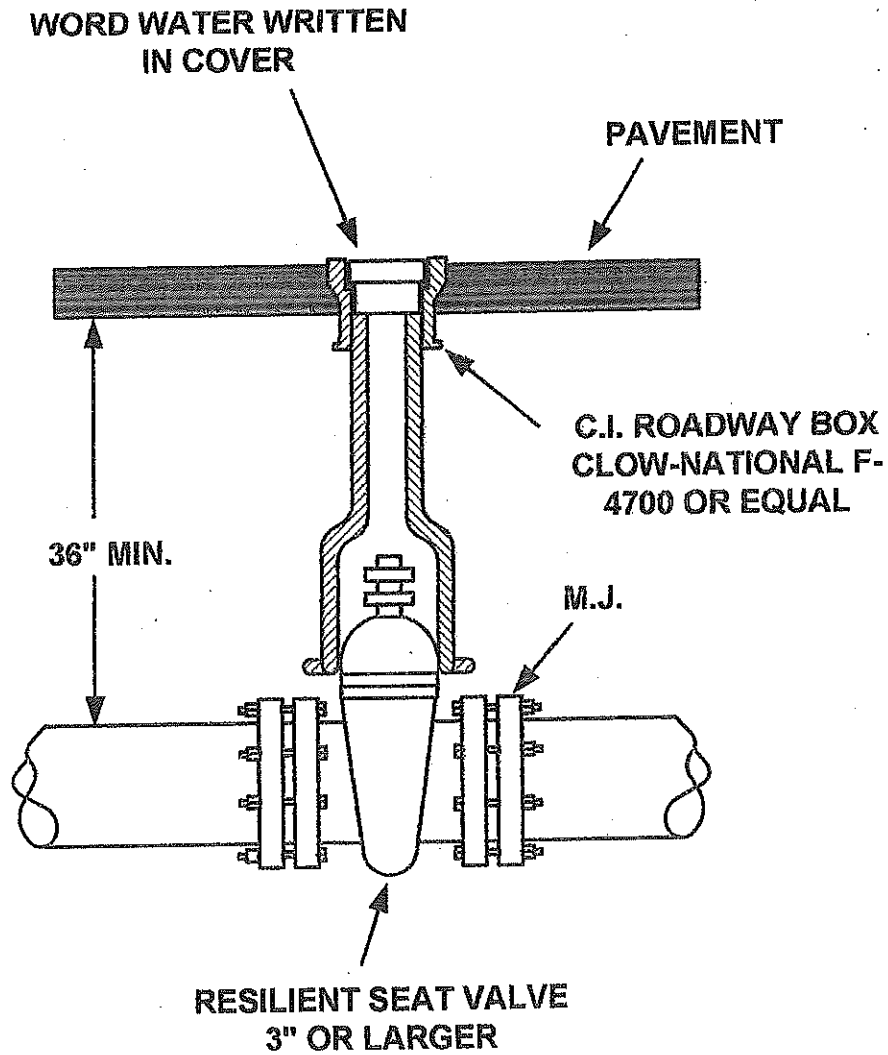


**CITY OF AUBURNDALE
TYPICAL RESTRAINING CLAMPS AND
RODS
(use for all bends and tees)**



PRECAST CONCRETE REACTION BLOCKING MUST BE USED UNLESS PIPES ARE RESTRAINED AT LEAST 3 JOINTS BACK FROM FITTING IN ALL DIRECTIONS.

CITY OF AUBURNDALE TYPICAL ROADWAY VALVE



CITY OF AUBURNDALE WATER AIR RELEASE VALVE & BOX NOT TO SCALE

